



COMMITMENT IS THE DIFFERENCE

DUCTLOK FLANGING & FASTENERS

technical

tel +27 11 974 2425
fax +27 11 974 2443
web www.europair-africa.com
email: info@europair.co.za

Europair Africa (Pty) Ltd
(a div. of First Strut)

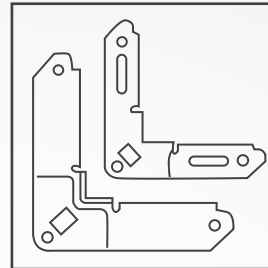
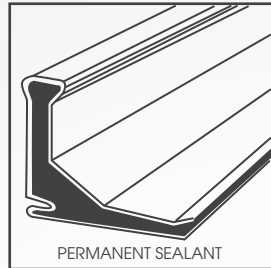
Cnr. Grader and Vuurslag
Spartan Ext. 3
Kempton Park
Johannesburg

FLEXIBLE DUCTING

THE TOTAL DUCT FLANGE SYSTEM

DUCTLOK FLANGE

A roll formed galvanized steel angle incorporating a permanent non hardening sealant, which guarantees a dependable air tight connection - eliminates the need for post installation sealing of the duct.

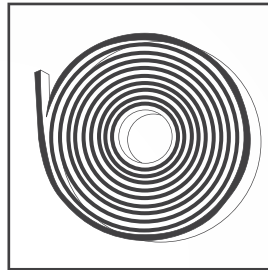
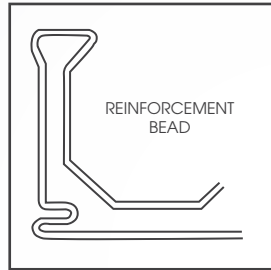


CORNER PIECE

The Ductlok corner piece is ribbed and edged flanged for extra rigidity and features an embossed dimple ensuring an extra tight corner joint. The bolt hole is suitable for carriage type or normal bolt corners, available in 2 sizes; Junior and Senior.

REINFORCEMENT BEAD

The unique DUCTLOK REFORCEMENT bead makes the flange stronger than conventional flanges, thereby reducing the necessity for many different gauges of flange profiles. DUCTLOK produces only 2 sizes to cover all applications. (DUCTLOK JUNIOR - 25mm x 0.8mm, DUCTLOK SENIOR - 35mm x 1.00mm).

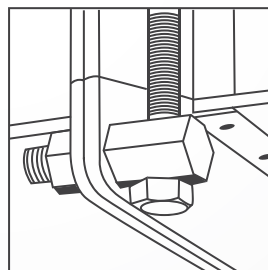
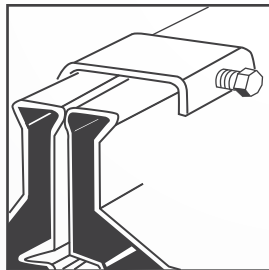


GASKET TAPE

A Butyl rubber sealant strip for insertion between Ductlok flanges. Easily installed. The tape is water, heat and UV resistant.

JOINING CLAMP

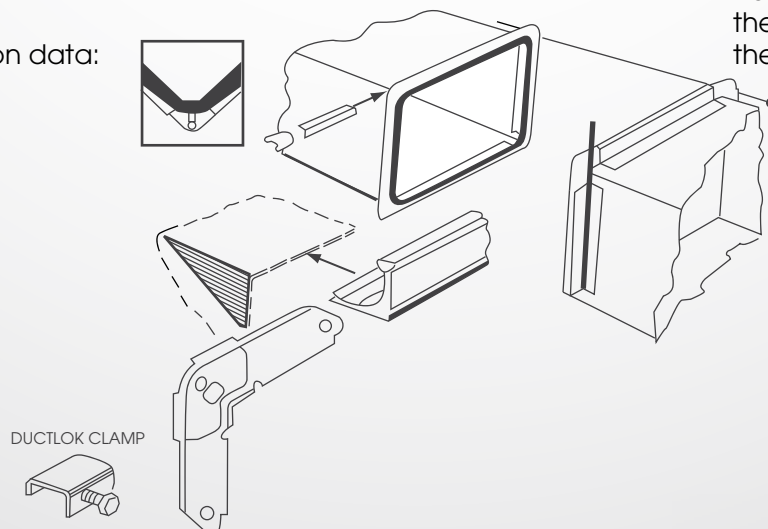
Ductlok Bolt-on flange clamp for clamping of duct flange joints.



HANGER BOLT

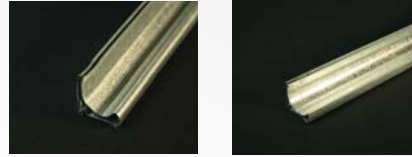
The Ductlok Hanger Bolt is a new concept in reducing your duct hanging costs. When fitted to the Ductlok corner piece in place of a normal or carriage bolt, a length of threaded duct hanging rod can be fitted through the hanger bolt, thus permitting the duct hanger to be fixed to the corner piece.

Assembly and installation data:

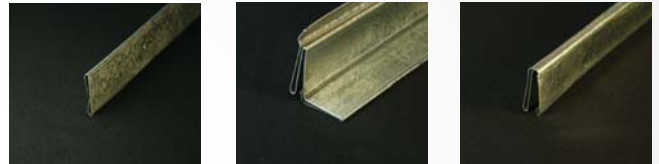


Assembly and installation data: (continued)

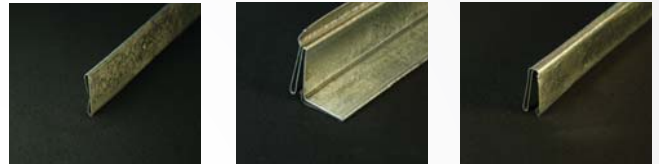
| CODE | DUCTLOK | QTY |
|---------|----------------------|---------|
| 1510025 | Junior flange (25mm) | 5 metre |
| 1510035 | Senior flange | 5 metre |
| 1520025 | Junior Corner | 100 |
| 1520035 | Senior Corner | 100 |
| 1530200 | Ductlok Clamp | 100 |



| CODE | DUCTLOK | QTY |
|---------|------------------------|----------|
| 1530320 | Gasketing (5mm) | 10 metre |
| 1530306 | Eurostick Gasket (6mm) | 60 metre |
| 1532900 | Ductlok Hanger Bolt | 10 |



| CODE | DUCTLOK | QTY |
|--------|------------------------------|---------|
| 502012 | Bar Cleat (reinforced cleat) | 2400 mm |
| 502047 | Drive Cleat | 2400 mm |
| 503055 | S Cleat | 2400 mm |



EUROPAIR is able to offer, effective and economical insulation fastening systems to meet your needs. These range from pins and washers, clip pins and hand held spotters, right through to automatic rolling and bulk feed pinspotters. The PN spotter pin and washer are used with the lightweight hand held LF2000 pin spotter - the industry standard. The CP clip pins with an integral nail washer are used with the MFPT, PBFS and other automatic pinspotters. CP clip pins by Duro Dyne have "lathe cut" points to ensure uniformly precise points and easy push through. Avoid imitations and settle for the leader.



| CODE | LABEL | QTY |
|--------|------------------|----------|
| 900019 | PN 19 Weld pin | 1000 |
| 900032 | PN 32 Weld pin | 1000 |
| 900050 | PN 50 Weld pin | 1000 |
| 900002 | EC 2 Washer | 1000 |
| 900119 | PN 19/EC 2 set | 1000 set |
| 900132 | PN 32/EC 2 set | 1000 set |
| 900150 | PN 50/EC 2 set | 1000 set |
| 901028 | CP 12 Clip pin | 1000 |
| 901031 | CP 34 Clip pin | 1000 |
| 901040 | CP 150 Clip pin | 1000 |
| 400017 | 50 - Gripnail | 1000 |
| 400025 | 100 - Gripnail | 1000 |
| 401014 | 200 - Griphammer | each |
| 902018 | LF 2000 | each |
| 902059 | MFPT | each |
| 902000 | PBF | each |

